

- Welding of new 60" Activated Sludge Effluent pipe

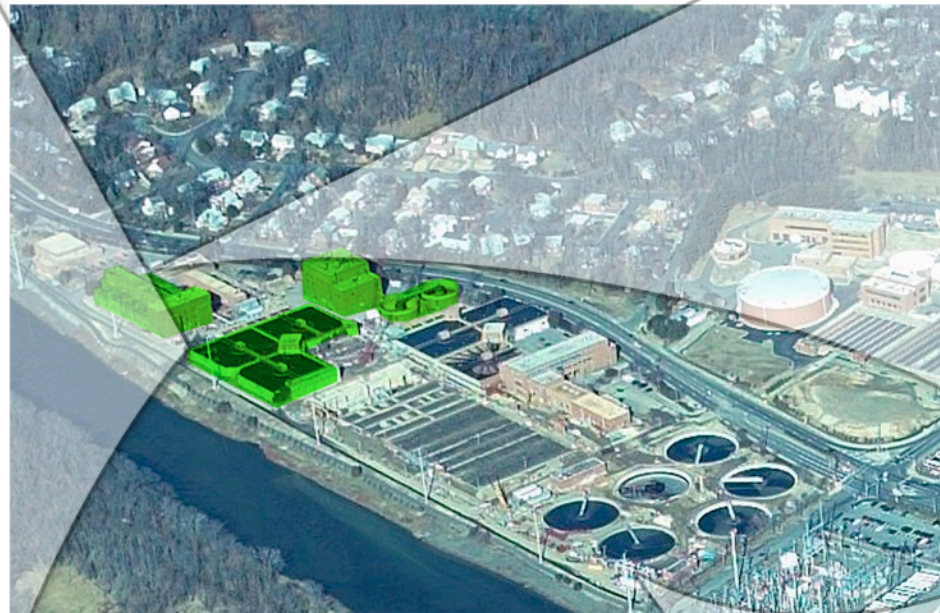


March 2006

- Installation of 60" Activated Sludge Effluent pipe is completed



April 2006



- Stormwater management structures adjacent to Chlor/Dechlor Facility are installed



April 2006

- First delivery of ferric chloride to the Temporary Ferric Chloride System



January 2006